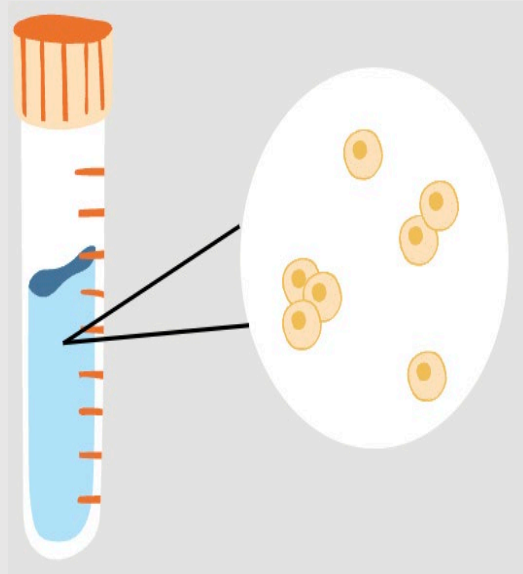
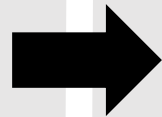
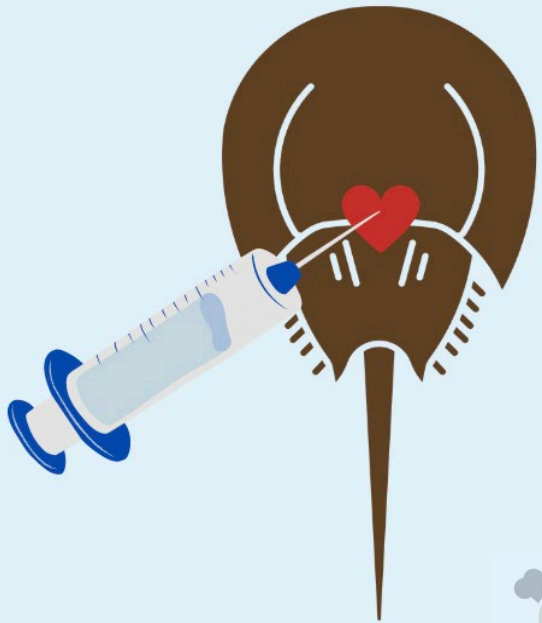
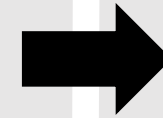


# THE POSSIBILITIES ARE LIMULUS: OUR VITAL NEED FOR THE ATLANTIC HORSESHOE CRAB, *LIMULUS POLYPHEMUS*

Kerryanne Litzenberg



“Limulus Amoebocyte Lysate”



What are the physiological effects of age on horseshoe crab blood chemistry, metabolism, and mortality?



Young



Middle



Old